

# PLAYER REPORT

## HAMZAT OJEDIRAN

Debreceni VSC | NB I | 2023/2024



### MATCHES ANALYZED

All matches of season 2023/2024

### CREATED

13/08/2024



# Summary

## Defending

- He made the ball recoveries all around the pitch (especially in central area) and the ground challenges are located in the same area (highly active in right half-space)
- He is quite active out of possession and has an excellent defensive workrate compared to other DM's in the NB I.

## Possession

- As we can see on the typical passes and typical progressive passes heatmaps he's very active on the central area and connects the midfielders and the attackers very well.
- He can bypass opponents' defensive lines with his progressive passes and he's also able to pass the ball to his teammate or shoots on target.

# Summary

## Possession

- With the progressive passes he can create quality chances for his teammates.
- He is a typical symmetrical player from passing and heatmap point of view.

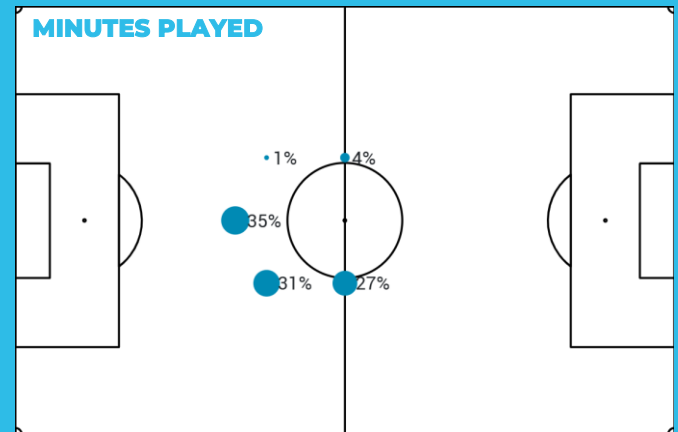
## Attacking

- As we can see on the Shot map he took many shots outside from the box mainly from the central area.
- He efficiently made dribbles, mostly in the central and half-spaces.
- Among other defensive midfielders, he is in the league average from xT ranking point of view.

# Summary

## Profile

- 39% Holding midfielder
- 33% Ball winning midfielder
- 28% Deep lying playmaker



## Similar players in style and role

### Premier League

- Wataru Endo ( Liverpool FC )
- Casemiro ( Manchester United )
- Boubacar Kamara ( Aston Villa )
- Albert Sambi Lokonga ( Luton Town FC )

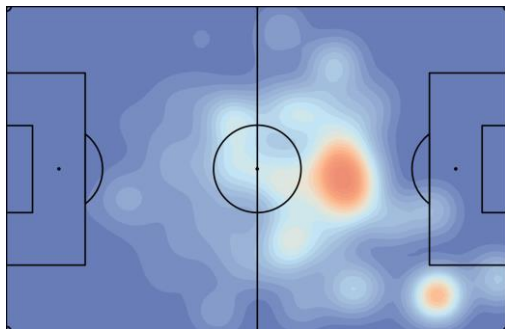
### Ligue 1

- Jean Onana ( Olympique de Marseille )
- Jonas Martin ( Stade Brestois 29 )
- Oussama Targhalline ( Le Havre AC )

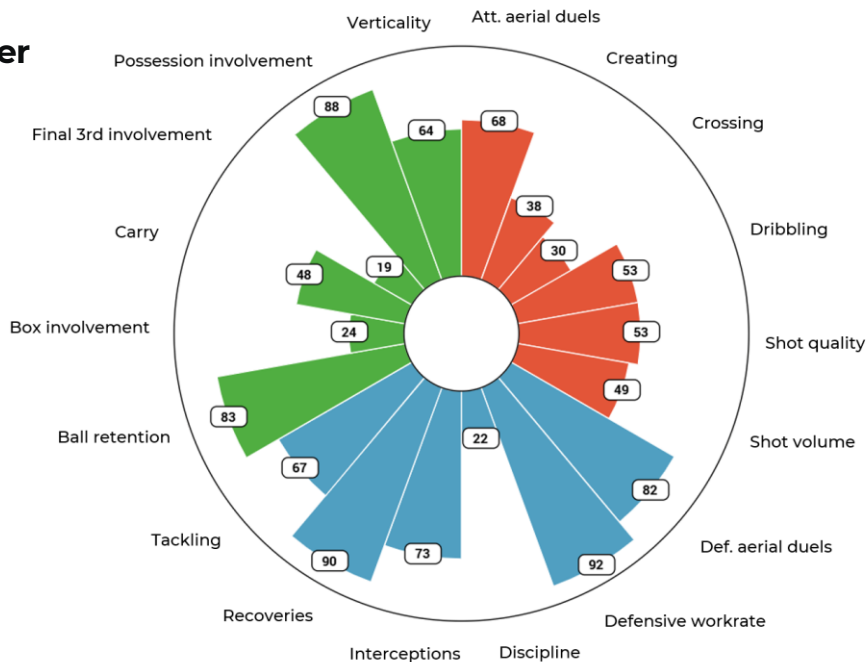
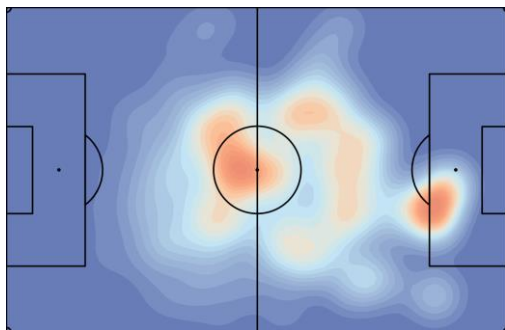
# HAMZAT OJEDIRAN

**Player position:** DM / CM  
**Player profile:** Holding Midfielder

## XT HEATMAP



## XT RECEIVED HEATMAP



- Good in **Possession involvement & Ball retention**  
 - League average level in **Carry**

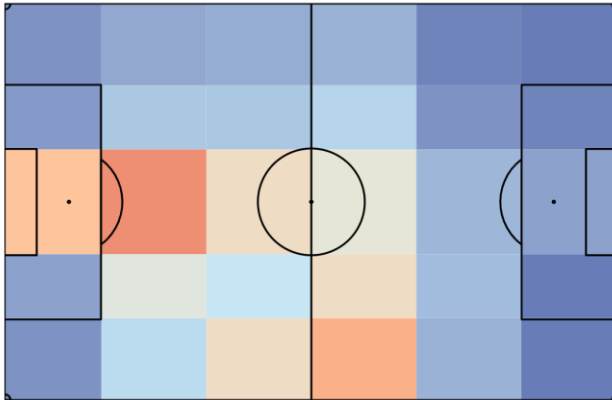
- Excellent in **Defensive workrate & Recoveries**  
 - Good in **Def. aerial duels, Tackling & Interceptions**

- Above the average in **Att. aerial duels**  
 - Average in **Dribbling, Shot quality & Shot volume**

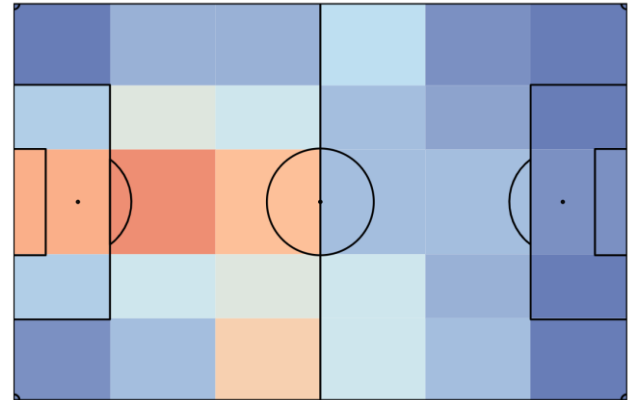
\*Percentiles on the pizza chart: Compared to his positional peers in the NB I (2023/24 season)

## Multiple positions on the field and perfect defensive traits

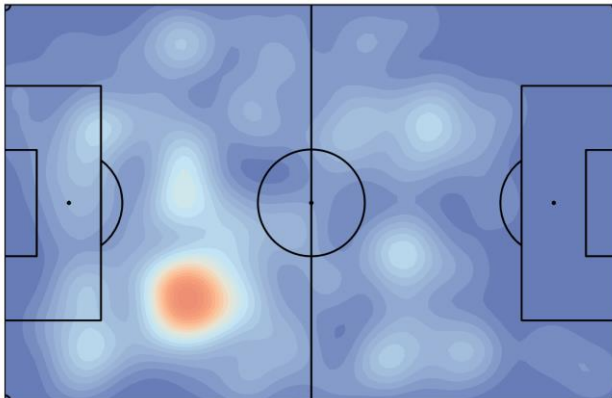
### Defensive Workrate



### Ball recoveries



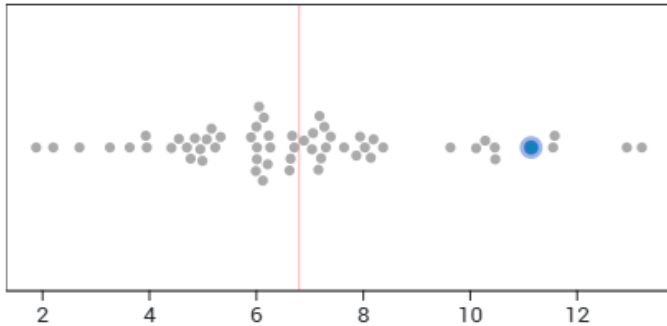
### Ground challenges



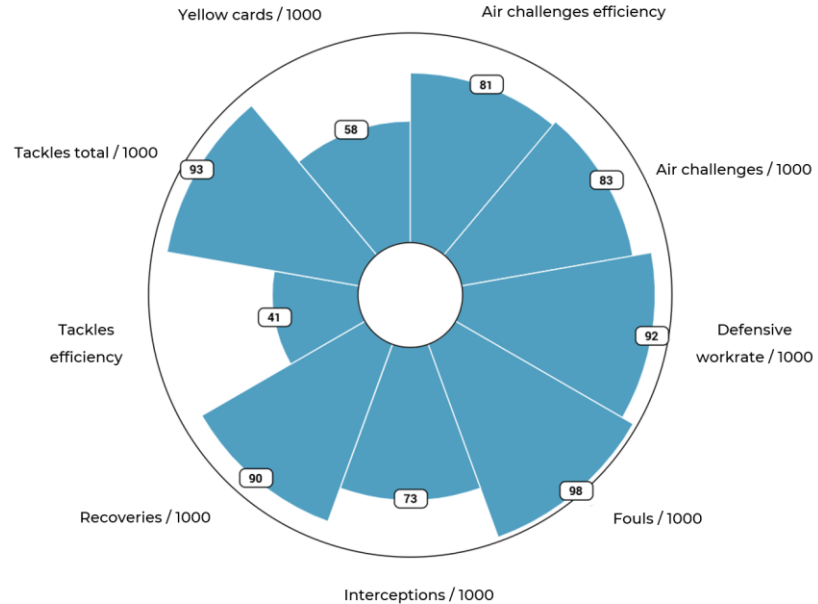
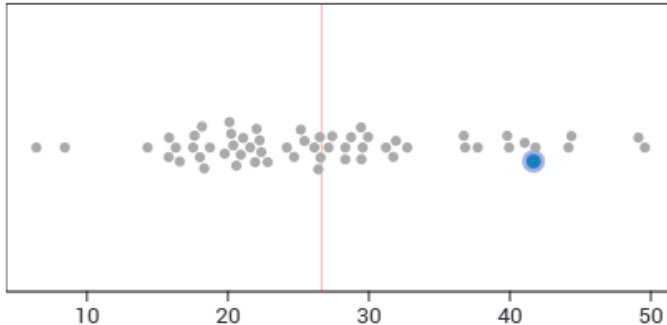
- He made the **ball recoveries all around the pitch** (especially in central area) and the ground challenges are located in the same area (highly active in right half-space)
- He is quite active out of possession and has an **excellent defensive workrate** compared to other DM's in the NB I.

# Hamzat's main strength during the defensive phase is his elite level of tackling ability, recoveries and defensive workrate.

TACKLES TOTAL/1000



DEFENSIVE WORKRATE/1000

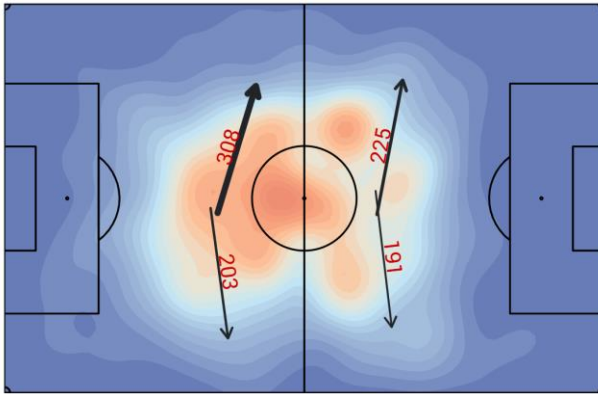


\*Percentiles on the pizza chart: Compared to his positional peers in the NB I (2023/24 season)

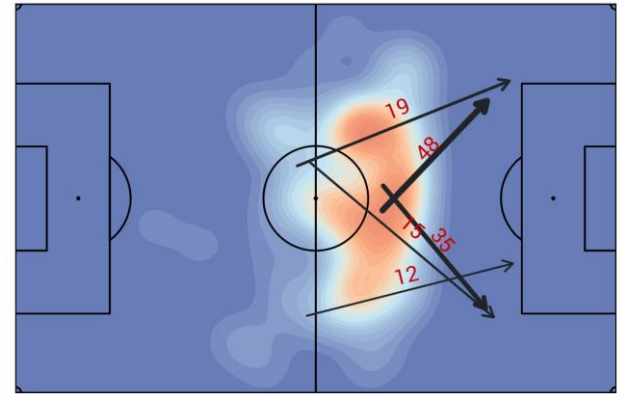


# Key role during the attacking build-ups and central dominance

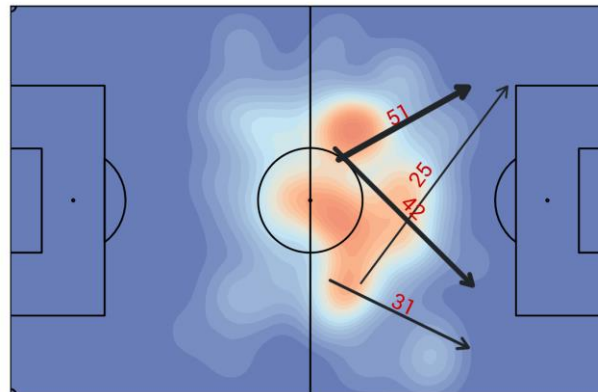
## Typical passes



## Typical passes into final 3rd



## Typical progressive passes



- As we can see on the typical passes and typical progressive passes heatmaps he's **very active on the central area** and connects the midfielders and the attackers very well.

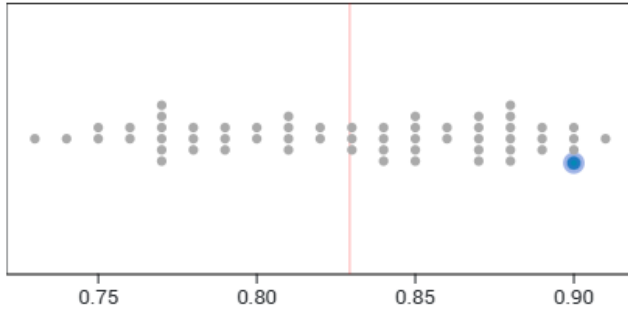
- He can bypass opponents' defensive lines with his progressive passes and he's also able to pass the ball to his teammate or shoots on target.

- With the progressive passes **he can create quality chances** for his teammates.
- He is a typical symmetrical player from passing and heatmap point of view.

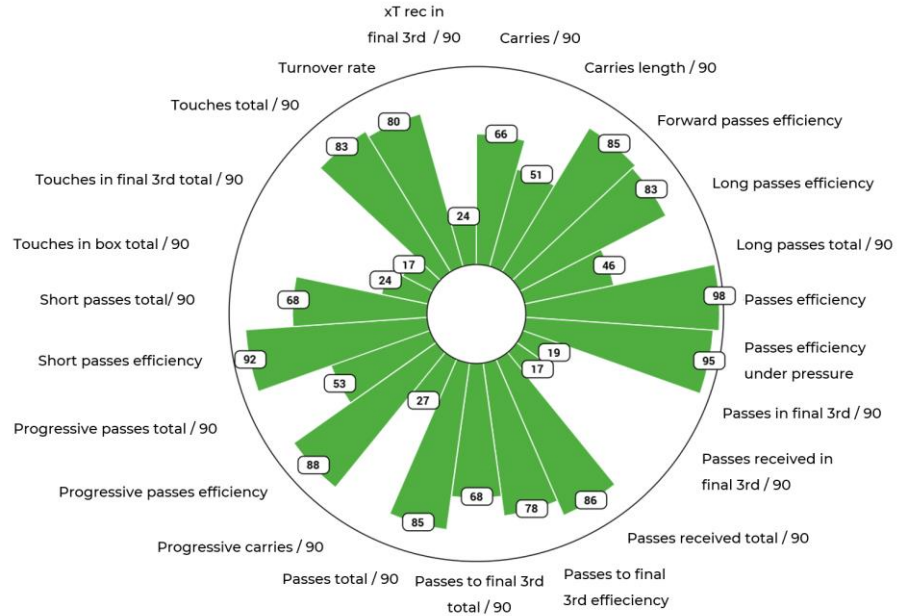
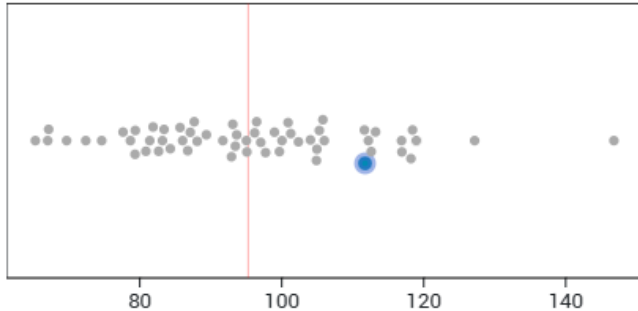


# He can execute the passes with high efficiency & is very useful during the attacking phase with dangerous carries as well.

## PASSES EFFICIENCY



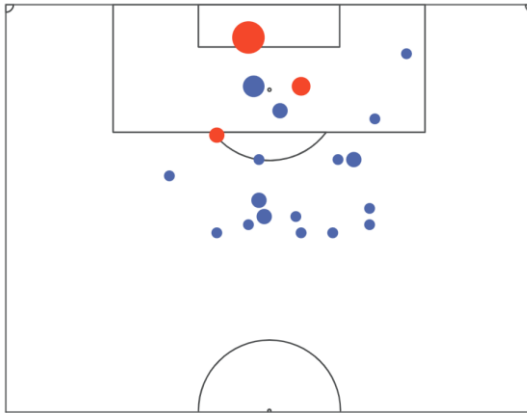
## TOUCHES TOTAL/90



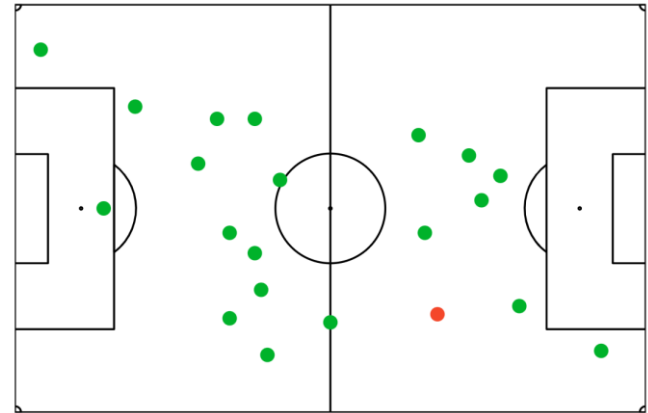
\*Percentiles on the pizza chart: Compared to his positional peers in the Bundesliga II (2023/24 season)

# High efficiency in dribbles and big chance creation in the opponent half

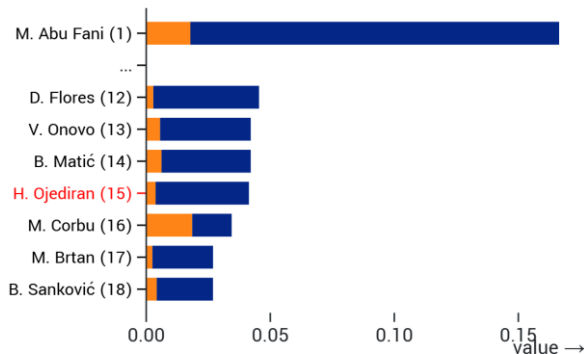
■ Shots ■ Goals **Shot map**



■ Successful ■ Unsuccessful **Dribbles**



■ Carry ■ Pass



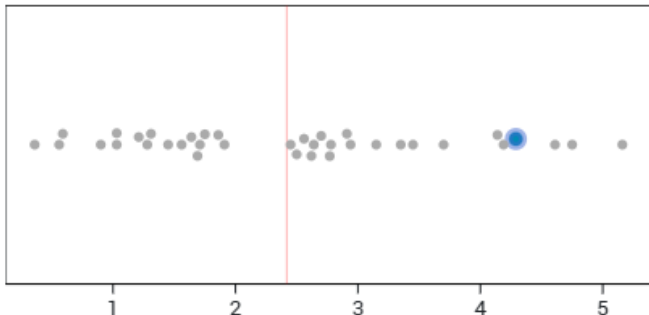
As we can see on the Shot map he took many **shots outside from the box** mainly from the central area.

He **efficiently made dribbles**, mostly in the central and half-spaces.

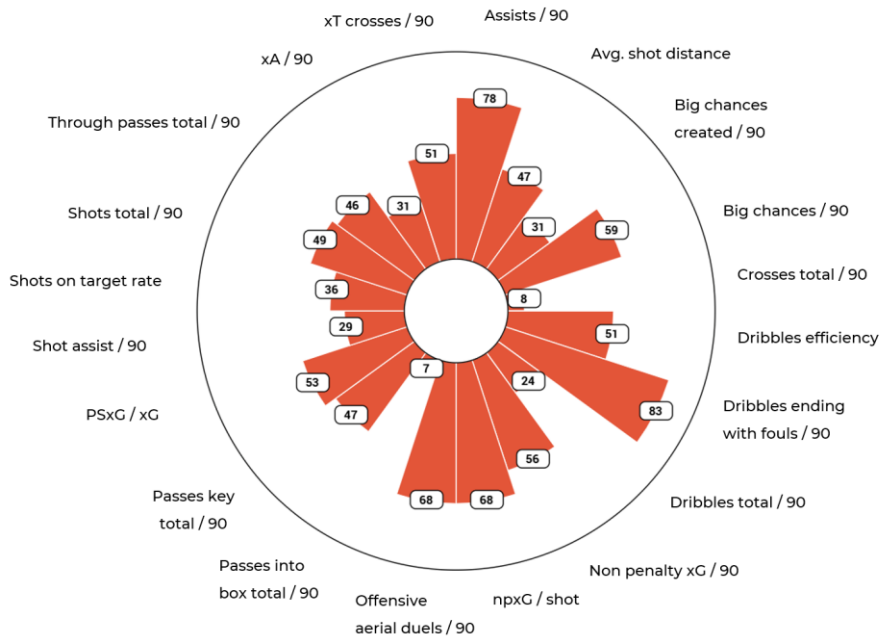
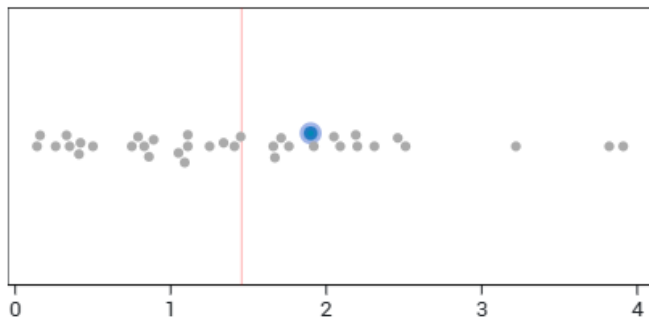
Among other defensive midfielders, he is in the league average from xT ranking point of view.

# He is useful in attacking phase with his chance creating ability to support the attacking players.

## DRIBBLES TOTAL/90



## CROSSES TOTAL/90



\*Percentiles on the pizza chart: Compared to his positional peers in the NB I (2023/24 season)



**Your next step in evolution**

